

INFORME DIARIO 18-DIC-19

NEGOCIACIÓN DE CEDEAR*

| Empresa | Código | Ratio ¹ | Última Negociación | Volumen (Mill.) ² | | Cierre (T+2) | | Variaciones ³ | | | Volatilidad 40 ruedas ⁴ |
|-------------------------------|--------|--------------------|-----------------------|------------------------------|----------------------|--------------|-----------|--------------------------|--------|---------|---------------------------------------|
| | | | | Última Rueda | Últimas 40 Ruedas | Moneda | Valor | Diaria | m/m | YTD | |
| PETROBRAS | PBR | 2.000 | 18-Dec-19 | 58.4 | 3937.6 | ARS | 1,160.50 | -0.81% | -1.11% | 28.15% | 46.19% |
| TENARIS S.A. | TEN | 2.000 | 18-Dec-19 | 15.9 | 499.0 | ARS | 1,648.00 | -3.34% | -0.75% | 12.40% | 41.13% |
| BARRICK GOLD CORP. | GOLD | 1.000 | 18-Dec-19 | 13.4 | 524.8 | ARS | 1,305.50 | -0.65% | 3.29% | 160.98% | 46.44% |
| APPLE INC. | AAPL | 0.100 | 18-Dec-19 | 9.6 | 601.9 | ARS | 2,056.00 | -2.86% | 1.91% | 246.07% | 45.05% |
| COMPANHIA VALE DO RIO DOCE | VALE | 0.500 | 18-Dec-19 | 6.4 | 429.3 | ARS | 480.00 | -1.54% | 9.97% | 94.33% | 47.85% |
| THE COCA COLA COMPANY | KO | 0.200 | 18-Dec-19 | 5.9 | 264.2 | ARS | 791.00 | -4.00% | -0.79% | 116.93% | 38.01% |
| VISTA OIL & GAS SAB DE CV | VIST | 5.000 | 18-Dec-19 | 5.8 | 87.0 | ARS | 3,018.50 | 6.79% | 35.79% | 35.79% | 83.31% |
| THE WALT DISNEY COMPANY | DISN | 0.250 | 18-Dec-19 | 3.4 | 197.2 | ARS | 2,684.00 | -3.54% | -2.31% | 149.69% | 44.48% |
| MERCADOLIBRE INC. | MELI | 0.500 | 18-Dec-19 | 3.2 | 346.7 | ARS | 21,315.00 | -2.85% | 1.58% | 276.15% | 44.88% |
| BANCO BRADESCO S.A. | BBD | 1.000 | 18-Dec-19 | 3.0 | 155.5 | ARS | 628.00 | -2.18% | 2.33% | 74.41% | 49.87% |
| CISCO SYSTEMS INC. | CSCO | 0.200 | 18-Dec-19 | 2.6 | 35.3 | ARS | 685.50 | -1.37% | -2.07% | 117.59% | 48.58% |
| ALPHABET INC. | GOOGL | 0.034 | 18-Dec-19 | 2.6 | 89.6 | ARS | 3,451.00 | -1.68% | -1.20% | 146.50% | 39.30% |
| MCDONALDS CORPORATION | MCD | 0.250 | 18-Dec-19 | 2.5 | 234.6 | ARS | 3,553.00 | -4.50% | -3.71% | 106.90% | 36.85% |
| AMAZON.COM INC | AMZN | 0.014 | 18-Dec-19 | 2.5 | 94.5 | ARS | 1,811.00 | -1.04% | -2.53% | 64.04% | 37.69% |
| GLOBANT S.A. | GLNT | 0.500 | 18-Dec-19 | 2.1 | 132.8 | ARS | 3,689.00 | -3.23% | -3.25% | 134.22% | 57.62% |
| MICROSOFT CORP. | MSFT | 0.200 | 18-Dec-19 | 1.6 | 176.5 | ARS | 2,270.00 | -2.41% | 0.29% | 196.90% | 38.90% |
| AT&T CORP. | T | 0.111 | 18-Dec-19 | 1.6 | 40.7 | ARS | 954.00 | -1.09% | -4.98% | 169.31% | 45.71% |
| CITIGROUP | C | 0.333 | 18-Dec-19 | 1.3 | 124.2 | ARS | 1,919.00 | -1.99% | 1.78% | 222.79% | 48.34% |
| PJSC GAZPROM | OGZD | 0.500 | 18-Dec-19 | 1.1 | 113.4 | ARS | 295.50 | -0.84% | -3.59% | 273.36% | 54.76% |
| THE HOME DEPOT INC. | HD | 0.250 | 18-Dec-19 | 0.9 | 29.9 | ARS | 4,050.00 | 4.38% | -9.02% | 169.62% | 47.60% |
| ALIBABA GROUP HOLDING LIMITED | BABA | 0.111 | 18-Dec-19 | 0.7 | 35.9 | ARS | 1,693.00 | -3.40% | 9.23% | 94.37% | 48.42% |
| GENERAL ELECTRIC COMPANY | GE | 1.000 | 18-Dec-19 | 0.5 | 71.7 | ARS | 807.50 | -2.94% | -7.92% | 181.44% | 58.40% |
| TESLA INC. | TSLA | 0.067 | 18-Dec-19 | 0.5 | 30.2 | ARS | 1,895.00 | 0.80% | 4.84% | 145.78% | 70.71% |
| WAL-MART STORES INC. | WMT | 0.333 | 18-Dec-19 | 0.2 | 43.7 | ARS | 2,947.50 | -3.57% | -2.37% | 163.87% | 34.70% |
| JOHNSON AND JOHNSON | JNJ | 0.200 | 18-Dec-19 | 0.1 | 57.5 | ARS | 2,110.00 | -2.07% | 4.75% | 98.32% | 43.93% |

(*) Se consideran los 25 CEDEAR más negociados, de aquellos que registraron operaciones en plazo estándar (T+2), en el día y en al menos el 50% de las últimas 40 ruedas.

Notas:

(1) Cantidad de acciones subyacentes por Cedear

(2) Los volúmenes en USD se convierten a pesos utilizando el tipo de cambio bancos mayorista vendedor del día

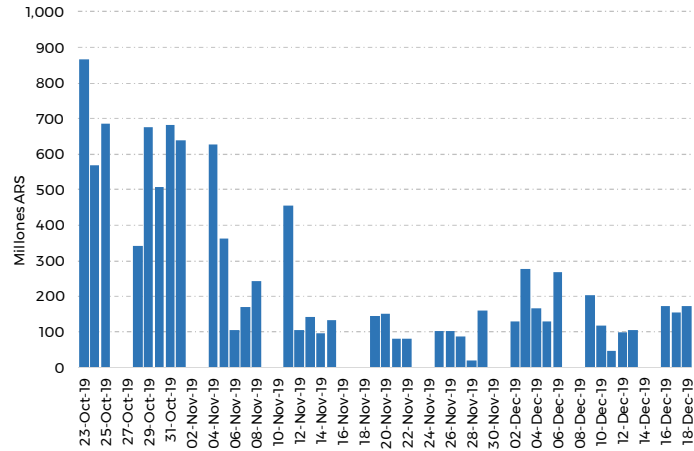
(3) Id: respecto del día previo o la última fecha negociada - m/m: mismo día del mes previo o fecha inmediata anterior -

YTD: desde el último día del año previo o la fecha inmediata anterior

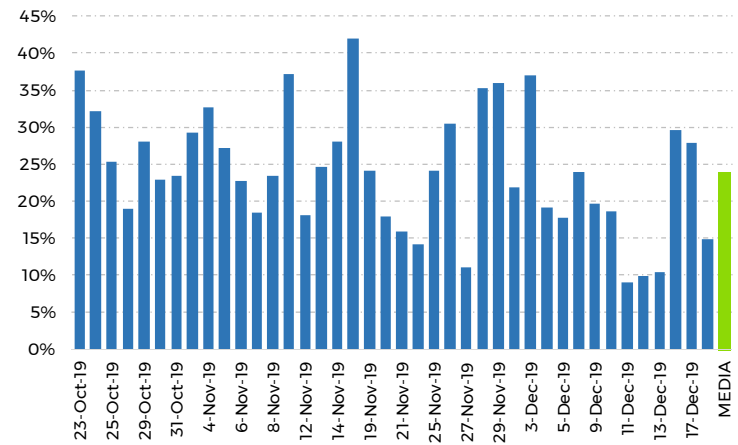
(4) Volatilidad de las últimas 40 ruedas anualizada

(5) Volumen efectivo últimas 20 ruedas. En el caso de especies de Cedear negociadas en USD, los volúmenes se convierten a pesos utilizando el tipo de cambio bancos mayorista vendedor del día

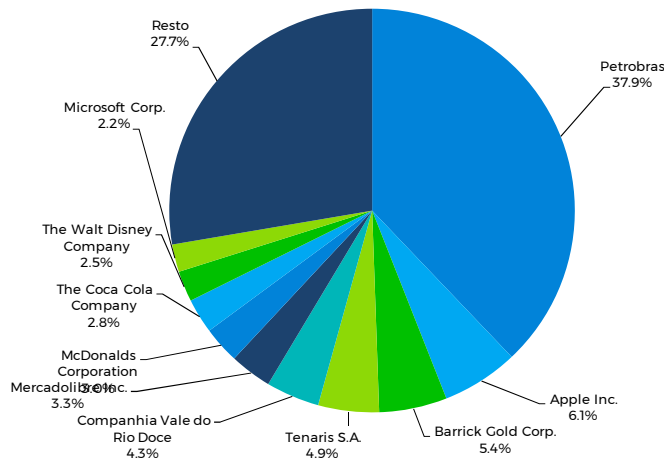
Volumen Cedear (Mill. ARS)*



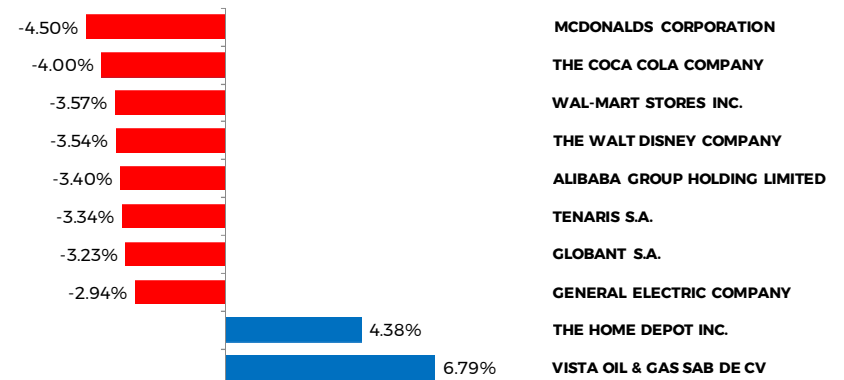
Volumen CEDEAR / (Volumen CEDEAR + Acciones)*



Participación de Mercado**



Principales variaciones del día, T+2***



(*) Últimas 40 ruedas, todos los plazos de negociación y monedas de liquidación.
(**) Volumen efectivo. Últimas 40 ruedas, todas las monedas, todos los plazos y monedas de liquidación.
(***) Contempla las variaciones de los Cedear contenidos en este informe.